

The LYDDEN



Issue 542 February 2020



For the Parish of
LYDDINGTON and WANBOROUGH

In the United Benefice of Lyddington, Wanborough, Bishopstone and Hinton Parva



The beauty of wood without the hassle

This traditional timber look window range, manufactured from low maintenance PVCu, has a grained wood effect finish. Available in a wide range of colours, a combination of classic styling and modern materials makes it ideal for timber replacement in a conservation area.

- Reduce energy bills
- Six point high security locking
- Reduce condensation
 - No painting
- Double or triple glazed
- 10 year insurance backed guarantee

Also available, composite doors with the look and strength of timber doors but with no maintenance. Top security claw locking systems fitted as standard.

For all your double glazing windows, doors and patio doors telephone us now for a free no obligation quote from a trusted company with over 20 years trading.



DA Windows and Doors
High St | Wanborough

01793 790754



Windows & Doors



Nationwide
PROPERTY LETTINGS

One of the longest established letting agents in the county
who bring you experience with a modern approach & unrivalled
property expertise and marketing knowledge.

Call Gary Sumner on 01793 513130



www.nationwidepropertylettings.com

PRIMARY

HOMES & LETTINGS

01793 641641

www.primaryhomesandlettings.co.uk

*Your Local
Family Run
Business*



Professional vehicle valeting and detailing

• SERVICES •

- Full Valet
- Protection Detail
- Winter Protection Detail
- New Car Preparation
- Enhancement Detail
- Paint Correction Detail
- Tailor Made 'In Depth Detail'
- Specialists in Ceramic Coating application

• Newly added for the winter months is our Winter Protection Detail •
For more information on prices and what is involved in our services, please do not
hesitate to email or call us!

All of our services can be tailor made to suit your wants and needs.



ADAM COTTAM
indepthdetailing@outlook.com
07794 979 353



The Lyden Magazine – February 2020

February Diary

Event	Date	Page
Playgroup Jumble Sale	1 February	10
PTA Quiz Night	1 February	11
Wanborough Village Litter Pick	4 February	6
Liddington Parish Council Meeting	5 February	8
Wanborough Village Litter Pick	7 February	6
Full peal of bells, Liddington	8 February	12
Farmers' Market and Café	15 February	5
Chiseldon Local History Group	19 February	16
Ward Councillor Meeting	29 February	8
Wanborough Parish Council Meeting	24 February	7

February 2020 Church Services

Sunday 2 February	08.30 10.30 18.00	Holy Communion Family Communion Evensong	Bishopstone Wanborough Hinton Parva
Wednesday 5 February	19.00	Midweek Communion	Wanborough
Sunday 9 February	---	No Services	No Service
Wednesday 12 February	19.00	Midweek Communion	Wanborough
Thursday 13 February	13.30	Dobbin Day Service	Wanborough
Sunday 16 February	08.30 10.30 18.00	Holy Communion Family Communion Evensong	Hinton Parva Wanborough Bishopstone
Wednesday 19 February	19.00	Midweek Communion	Wanborough
Sunday 23 February	08.30 10.30 18.00	Holy Communion Family Communion Evensong	Wanborough Hinton Parva Liddington
Wednesday 26 February	19.00	Ash Wednesday	Wanborough

Please note Wednesday Services are now held in St Andrew's, Wanborough, not The Vicarage

Details of Church Services correct at time of going to press. They can also be found at www.wanborough.info

Copy date for the Lyden is 14th of the month prior to publication

Vicar's Letter

Dear Friends and Neighbours,

As well as remembering the presentation of the Child Jesus in the temple, Candlemas was also a celebration of the point that there were enough candles for all of the worship for the next twelve months. Often times, the whole years supply of candles was gathered in the Church and a Service of Thanksgiving was held. It was yet another opportunity for the community to gather. The opportunity for our community to gather continues to happen each and every Sunday, and on Wednesday evenings too. Our services are just that, opportunities to gather that are there for us all.

The primary focus of our Services is to give thanks and praise. They are also an opportunity to stop and appreciate what we have in life, who we are in life and to begin to understand just how loved we are. It's why Weddings, Christenings and the sharing of a simple meal are key moments both in our lives and in the life of the Church. Occasionally God shows us His love directly in a Service. I have a friend who has what she describes as "White Light Moments" when she is at a service in Church, but more often God will show God's love through the care, the warmth and the hospitality of those who have gathered with us. So an attitude of gratitude is key.

Like the gathering of any fishing fleet, there is also an opportunity to combine our strength in our prayers; both for our world and for ourselves. While working in our own strength we will only ever influence those areas of life that we have a direct hand in. When we go to God in prayer, the Creator of the Universe has the power to influence the circumstances surrounding the situation that we are concerned about. It's why 'answered prayer' looks so different from the answer we may have had in mind when we first "got on our knees" as it were. The peace that comes with prayer is well known and candles are often used as a point of focus in prayers, and the use of candles and their position in church has evolved over the years.

They were there primarily so that those who had to read could do so. The candles on the altar were there for exactly this reason, and so they would have been stood either side of the book or book stand, rather than symmetrically at each end of the altar. In the pews, there would have been what looked like tridents, bolted to a number of pews, with a candle on each prong, to help the parishioners to see. The lighting of a candle for individual prayer is often accompanied by some silence; if not in the mind, certainly around the action of doing so. It was in the silence of people coming down, from whatever they had self medicated on the night before, in which the greatest work was done while working with homeless drug dependants.

So, we can see that in many ways we are linked even when we are not in the same room. So, it comes as a huge sadness whenever I hear or experience people being interested in themselves or their own family members ahead of everyone else. It's as if they have forgotten that it is everyone around them that helps the place that we live in to be the amazing place that it is. Doing our bit for those around us is a lovely way of thanking them. Perhaps this is why voluntary work can be so rewarding. It is also another aspect of our True Life in God. So, whatever you are up to this month, may you know God's peace and His love for you.



With best wishes and prayers,

Bill

If you have anything that you would like our village prayer group to pray for please telephone 790088 or email villageprayers@gmail.com

Dobbin Day

One of Wanborough's oldest traditions, Dobbin day is an annual event held in St Andrew's Church. The tradition dates back to 1745, when William Stanley willed a bursary to the parish. The interest on this money was forever to provide bread for distribution to the poor of the parish during a service held on the 1st Sunday after 19 February each year. The funds were invested in land, and rent from that land, a field located in The Marsh, still provides for the loaves to this day.



Dobbin Day Stamp

Dobbin is an old Wiltshire word meaning "Bread" – hence Dobbin Day. The bread for the service used to be baked in the Parish by one of our local bakeries. Hewer's Bakery was the last bakery in the parish to produce the loaves. After they closed, production of the loaves moved to Sainsbury's in Stratton. Each Loaf is baked on the day, marked using the Dobbin stamp and collected in readiness for the service.

The day of distribution was forced to change after riotous youths from Swindon were found kicking their loaves around like footballs. Having moved the day to a week day this rebellious element was no longer able to attend the service. Today the bread is distributed to all children in years 1 and 6 at Wanborough Primary School. The children prepare and run the service themselves and the Vicar distributes the bread during the service.

All are welcome to attend the service. So, if you are about and want to be part of our ancient tradition this year, the service is to be held at St Andrew's church on Thursday 13 February at 1.30pm.

Wanborough Farmers' Market

Saturday 15 February 9am-12 at Wanborough Village Hall.



If you see someone walking or cycling in Wanborough every day whatever the weather – it may well be Judith Evans. She's taken up the Melanoma 1,000 challenge to walk/cycle/run/crawl 1,000 miles in 8 months (that's about 4 miles every day). At the time of writing she's clocked up a very healthy 580 miles! She's doing this in memory of her late husband Huw, who died of skin cancer a few years ago, to raise money for the charity Melanoma Focus which funds melanoma research and provides support for patients, carers and healthcare professionals.



Sadly the incidence of skin cancer seems to be on the increase. Melanoma Focus is quite a small charity compared to many others but the research and support it gives to patients and their families is immense. So come to the **Community Connect Coffee Morning** at the Farmers' Market, for free tea, coffee and a home made cake – and you'll have the opportunity to make a donation to this incredibly valuable charity, and support Judith.

The **Farmers' Market** has a widening array of goods and produce for sale including Ken's fresh fish, Hinton Marsh Farm meats as well as fantastic veg, jams, honey and fair trade goods. For more information about the market contact Sue or David Birley on 01793 790438 or sbirley@gn.apc.org

Ken's Fish to visit weekly

Ken will continue to join the farmers' markets but you can also find him outside the village hall on Thursdays between 3 and 5pm. To order fish or find out what he has, phone him on 07590 979 194.

Liddington 100 Club

The winner for November was Julie Bishop, and for December was Tony Pullan - congratulations to both Julie and Tony. **Caroline Tams**

Thank You from Monica

Thank you to everyone who came along to use my Christmas gift wrapping service at the December Farmers Market, as well as friends, neighbours and family who also gave generously. As a result I have managed to donate £25 to the Wiltshire Air Ambulance. I'm hoping to be at the Farmers' Market again next Christmas wrapping presents, so I look forward to seeing you then! **Monica Davies**



Wanborough Parish Council

Footpath and Village Maintenance

Parish Council have completed cutting all the hedges that can be done with hand held tools. There has been a delay in the hedge cutting that needs to be completed with a tractor and side flail, but the contractor has confirmed that this work should be completed by the end of January, so hopefully by the time you receive this magazine they will have been done.

The broken bin at the Lower Recreation field has now been replaced.

If there is anything that you feel needs to be done around the village, then please report any maintenance issues to the Parish Clerk by either e-mail clerk@wanborough.info, by using the "Maintenance Report" on the Parish website www.wanborough.info, or alternatively text, ring or Whatsapp on telephone number 07588 769829.



Village Litter Pick

Once again the Parish Clerk will be organising two litter picks targeting the main problem areas in the village.

Tuesday 4 February, 11am - meet at Lynch Field, off Church Road. The aim is to clear litter from Pack Hill and Upper Wanborough.

Friday 7 February, 11am - meet at allotment car park. The aim is to clear litter from Wanborough Road and Lower Wanborough.



If you are able to spare a bit of time to help clear rubbish around the village it would be great to see you. All equipment is provided, but please just ensure you are wearing suitable clothing depending on the weather conditions.

Duke of Edinburgh – Volunteering

If there are any local children who are looking for an idea for their Duke of Edinburgh volunteering section then please contact the Parish Clerk who will be able to suggest some local opportunities within the community that could fulfil this category and which might be of interest.

Planning Update

Southern Connector Road - Compulsory purchase order

In order to acquire the land required for the Southern Connector Road, Swindon Borough Council are pursuing a Compulsory Purchase Order (CPO).

There are a number of landowners who are objecting to the CPO and as part of the CPO process, the secretary of state for housing, communities and local government has appointed an Inspector to hold a public inquiry.

The inquiry, which will be held in the Civic Offices, will open at 10.00am on Tuesday, 28 January 2020 and is expected to last until Thursday, 13 February 2020.

SBC's Local Plan Review 2036 consultation

Many thanks to all residents who have already commented on SBC's Local Plan Review 2036. The consultation closes at the end of January, so there may be time for some final comments regarding the three sites in Wanborough to be submitted before the deadline.

The three sites currently included in SBC's Local Plan Review as follows:-

Land to the north of Mayfield



Land off Hewer's Close



Land off Ham Road



SBC will review all comments received and we will wait to hear their final decision on the sites they propose to take forward.

Hooper's Field Project

Parish Council unanimously agreed to appoint Stanhope Wilkinson Associates (SWA) Architects to design and produce detailed plans for Hooper's Field improvement and expansion. SWA Architects have extensive experience in producing plans for this type of project and have come highly recommended from other Parish Councils who have used them. Plans will be produced based on the feedback Parish Council received during the feasibility study carried out, from information received from the clubs and from the questionnaires sent to all residents. SWA Architects are aiming to have some draft plans ready by the end of February after which there will be a presentation to all residents. More details to follow.

Regular updates from Parish Council can be found on their website www.wanborough.info, and by following them on Facebook.

The next Full Parish Council meeting is due to be held on Monday 24th February 2020; everyone is welcome to attend.



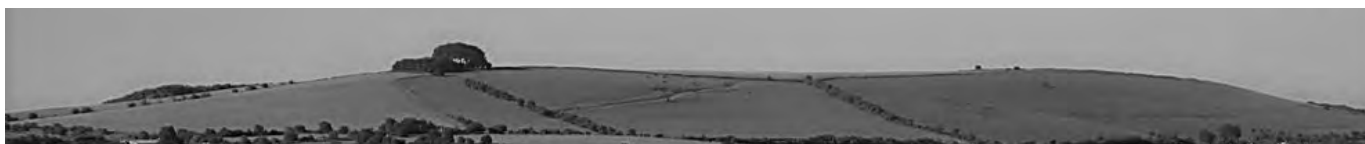
Highways

Residents may be aware that I am keen to see the existing Wanborough 'Prohibition of Through Traffic' Order 1978 enforced at Foxhill, as this will increase the safety of all residents by reducing the amount of traffic rat running through the villages.

It is therefore excellent news that SBC have appointed consultants to design and implement plans to help minimise rat running through Wanborough, Liddington and Bishopstone. I hope the consultants, as part of the process, will be consulting with the three Parish Councils, as well as SBC representatives, in order to gain a full range of views. This would give Wanborough another opportunity to mention the 'Prohibition of Through Traffic' Order 1978 in order to get SBC to upgrade the signs at Foxhill crossroads to the same standard as those at the opposite end, in Covingham.

It would also be helpful for SBC to record this restriction and other permanent traffic regulation orders (TRO's) on their website for all to see, as well as for satellite navigation systems to take account of the Prohibition of Through Traffic Order. **Cllr Colin Hayes**

Liddington Parish Council



Precept for 2020/21

At the January meeting it was unanimously agreed that the Precept would need to be increased by 4.16 % for 2020/21 to maintain the level of service that has been achieved since the transfer of services from Swindon Borough Council in 2017. Our aim has been to carry out works and maintenance where it is most needed and we hope you have seen an improvement. This increase will mean that the annual precept for a Band D property will be £61.30, a rise of £2.45 per annum. The Parish Council will continue to make every effort to ensure that the precept is no higher than is necessary and remains prudent and self-sustaining.

VE DAY – 8 May 2020

The Parish Council is liaising with the Village Hall Committee regarding celebrations to be held on the Playing Field on 8 May to commemorate VE Day. If anyone has any suggestions as to the type of event please contact Matthew or any of the Parish Councillors.

The next meeting of Liddington Parish Council will be held on 5 February 2020 starting at 7pm in the Village Hall. All residents are welcome to attend **Val Curtis, Clerk to Liddington Parish Council**

Ward Councillor update from Gary Sumner:

Next Ward Councillor Meeting :- Saturday 29 February, 9-11 at Wanborough Village Hall

WARD news and other surgery dates at www.ridgewayvillages.co.uk

Highways: The year ahead promises to be eventful. I'm anticipating that we will see Junction 15 improvements commenced and **my priority is to ensure that as far as possible the villages are protected during construction.**

White Hart is a £30m improvement and together with Gablecross will transform the operation of those

congested roundabouts improving journey times for existing residents for years ahead of the development.

In Wanborough I anticipate a range of Highways improvements will be brought forward and these will be shared with you. I will publicise such an opportunity once the detail is ready. These improvements are being funded out of the developments in the New Eastern Villages and will deter people driving through our village. I hope residents bear in mind that additional convenience for those driving along roads makes it more likely that people will cut through - sometimes people miss that point!

Planning: The 'Science Park' application at Inlands Farm was given an extension of time to end of February. They have not yet submitted the additional information expected back in November so another extension of time will be agreed and a consultation will take place on new information to be supplied. They continue to promote the 'Science Park' aspect with nothing in the plans to guarantee this claim.

An application for a 2m sq.ft distribution centre has been submitted at Symmetry Park (near Sainsbury's) and this will bring around 1500 skilled and semi skilled jobs in a facility which will use robotics and advanced technology. I've met those who will build this in the Autumn and it's a great boost for Swindon given the Honda situation.

WALES & WEST – GAS MAIN WORKS: I have published the work programme on my website as this includes (in Wanborough) Church Road, Kite Hill, Rotten Row, High Street and Burycroft plus Wanborough Road. Closures are planned for Kite Hill and Rotten Row so look at my website.

RURAL SUPERFAST BROADBAND: Come to my Ward meeting and let me know if you are having any problems?

Please call me on 790814 or email: gary@ridgewayvillages.co.uk

WanBeerFest III



The 3rd Wanborough Community Beer & Cider Festival



Friday 24 & Saturday 25 April 2020, 12noon – 11pm

@ The New Calley Arms, Wanborough

Tickets just £10 per day session

Includes; entry, programme, souvenir glass and £3* worth of tokens.

Food is available throughout the day until 8pm. Live music Saturday afternoon and evening.

Tickets are on sale now at the New Calley Arms, Wanborough

or online at <https://www.ticketsource.co.uk/the-old-boilers>.

General enquiries please email us at wanboroughbeerfestival@gmail.com

WANBOROUGH MAY DAY FAYRE: SUNDAY 3 MAY 2020

COULD YOU VOLUNTEER 2-4 HOURS HELP BEFORE EASTER PLEASE?

Before the fayre weekend arrives there are tasks that it would be really helpful to have volunteers involved with please: requesting and collecting raffle prizes; inviting and communicating with third party craft / produce stall holders; checking the prizes and stall equipment; sorting through all the books; organising the park & ride arrangements and many more. I'm working this year and have less time to allocate to all these preparatory tasks so if you could offer a couple of hours over 3-4 weeks in February or March please do get in touch and we'll find something that won't take over your life (promise!) but that would make a huge contribution to getting the fayre ready to go.

The fayre is scheduled for the Sunday this year to allow villagers to enjoy the VE day celebrations on the bank holiday Friday (see other article by Angela Raymond). Because of the day change the time available to prepare all the stalls and tentage is greatly reduced so can as many families as possible please volunteer to help man stands on the day or set up the stalls / tents on Friday 1 / Saturday 2 May. Without help I will just not be able to get the fayre ready this year. All help is greatly appreciated.

Wanborough Scarecrow Trail: Sat April 25 – Sun 10 May

Michelle McSweeney is kindly overseeing the list of scarecrows this year. We still have spaces around the trail so please make early contact with Michelle (michellemcsw@gmail.com) if you'd be willing to make and/or host a scarecrow this year. The theme is The World of Nursery Rhymes and Childrens Songs. If you're looking for costumes or props can I suggest a trip along to the Playgroup Jumble Sale on Saturday 1st February to save that last minute panic in April!!! We will be running our usual tea and trail sheet sales gazebo outside the village hall and hopefully the school (I'm yet to request this!) and will be looking for volunteers on the Saturdays and Sundays (and Bank Holiday Friday) please to fill the rota to ensure all the trailblazers from in and outside the village can enjoy refreshments whilst taking part in this popular activity.

Thank you in anticipation to the 100+ families and villagers who give their time to make these community events possible and successful. Please volunteer if you can to spread the load as much as possible. Proceeds from both these events will go to the Wanborough Community Trust for allocation to local projects and groups.

Tessa Lanstein: tessaannlanstein@gmail.com; 07795 057420

Wanborough Playgroup News

New Telephone Number - 07444 352587

Our Hours of opening have now changed to 9am-1pm Monday to Friday with an optional early start time of 8.45am.

January has been a fun month with some lovely books of the week including "Walking through the Jungle" when we acted out the story, retold the story using masks and props and moved like the animals in the story. "We're going on a Bear Hunt" saw us making instruments, playing in the bear cave and using torches, exploring textures in the sensory tray and retelling the story using items in our tough tray. "Goldilocks and the 3 Bears" saw our role play area being the house of the bears where there was 3 of everything. The children looked at size and the language of size as well sequencing the story and using masks to turn them into characters from the story. We also celebrated Chinese New Year when we enjoyed dressing up, learning about and acting out the story of the Chinese New Year, making red envelopes and looking at Chinese letters.

At the time of writing we are getting ready for our Jumble Sale which is being held on Saturday 1 February between 11am and 1pm. Jumble can be brought to the hall from 1pm-8pm on Friday 31 January and from 8am-10am on the Saturday.

Do you have a pre-school aged child? Why not come and visit? Please telephone 07444 352687 or email us at wanboroughplaygroup@hotmail.co.uk Sarah Ingram

Wanborough PTA News

Happy New Year!!! We had our first meeting of 2020 in the Brewers Arms on Monday 13 January and we were excited to find out that we have so far raised this academic year just over £4,000. This will go a long way into supporting our children and their learning, so a huge thank you all to those who have helped us raise this amount. As I write this Mr Drury is totting up exactly how many laptops and iPads we can now support the school in purchasing, which is wonderful news for the children's development of IT skills.

Fundraising & Donations

The recent KS1 disco raised a whopping £802 with hotdogs, sweets and LED garlands selling like hot cakes! We are also very lucky to have received a £1,000 donation through Barclays match funding. This is the first time that we have received a donation from Barclays and just goes to show what a difference such match funding schemes make. Please enquire whether your company offers something similar, as it really does make a difference to the amount we raise during the year. This academic year we have been able to purchase headphones, furniture for the new extension (leaky conservatory replacement) books for the class reading corners, beanbags and cushions; all with the aim of improving the children's learning environment.

Film Night

Coming up we are bringing the cinema experience to our children, holding a special film night on 24 January. We cannot wait to get all the crash mats out making a comfy environment to sit back and enjoy the film. We will have all refreshments covered with our very own popcorn and sweets stand, and of course have our famous "adult creche" complete with bar for our parents.

The Famous Quiz Night

Our famous quiz night is imminent! We used the opportunity last year to raise just over £1,000. Can you help us beat that this time? The quiz will be held in the School Hall on Saturday 1 February. If you get this magazine in time and would still like to enter email contactpta@wanboroughprimary.org to see if there are any last minute tables.

The PTA are becoming greener

Many of our children and parents are concerned about the environment and as such we have made a conscious decision to try and reduce our carbon footprint. At the moment we aim to do that by reducing the amount of paper and plastic we are using, along with continuing to recycle as much as possible after each event. As such you may have noticed that we have reduced paper that is coming home in the children's book bags, you will always find information about our events on the website, and forms that you may wish to download and print yourself to book your tickets or a place at one of our events, we will also have a small amount of booking forms at the school reception. Please also note that in most cases we are happy to receive bookings and monies or cheques with details written on envelopes (even better if reused) at the school office. All we ask is that you clearly indicate your or your child's name and which event it is for. For example, tickets for the Film Night could have monies in an envelope with "The Smith Family – Child name and Year, 2x adult 2x children" on it.

In addition to the reduction in paper printing we also aim to reduce the amount of plastic we use. We aim to do this by stopping automatic issuing of plastic glasses at our bar when you purchase a drink. Of course, plastic glasses will be available by request. To help support you are welcome to bring your own reusable plastic glass/cup to any of our events. We know these changes are only small, but we feel that every little does help.

Summer Fete – Raffle Donations

Whilst June seems a long way off — we have started planning this year's summer fete. One of our big fundraisers is the raffle. If you are in a position where you could help donate or even sponsor a prize please let us know by emailing contactpta@wanboroughprimary.org Whether it's a meal for two, bottle of wine, beauty treatment, family day out or activity — these prizes are a real boost to help us achieve our fundraising targets.

Upcoming events

1 February - Our Famous Quiz Night	
3 April - Easter Bake Sale	15 May - Key Stage 2 Party
17 June - Sports Day	20 June - Summer Fete

Our latest news can be found on the PTA page at www.wanboroughprimary.org. Or follow us on Facebook search for 'Wanborough Primary PTA' where you can find our most up-to-date information regarding what we are getting up to and our future events.

Wanborough Tennis Club at Hooper's Field.

We welcome new members. <https://clubspark.lta.org.uk/WanboroughTennisClub>

Club sessions continue throughout the winter. Wrap up warm and come along to play. Wednesday and Friday evenings 6:00 - 8:00 and Thursday and Sunday mornings 10:00 - 12:00.

Those who have just picked up a racquet for the first time and those who have been competing for years are equally welcome. Drop by and have a go! You will be assured of a warm welcome.

If it's been a while since you've picked up a racquet there is generally a Rusty Racquets session on Sunday afternoons from 2:00 pm. To find out if it's on please email secretary melaniebrough2@gmail.com

Wimbledon Ballot

The Wimbledon Ballot for 2020 tickets closes on Feb 14th and our ticket allocation will be determined by how many members have opted in, giving Wanborough as their club. All members aged 11 and over on Feb 14th are eligible. Please opt in to support our club ticket allocation. The draw for tickets will take place at the AGM. Date in April to be confirmed.

<https://www.lta.org.uk/major-tennis-events/grand-slams/wimbledon/ballots/btm-ballots-home/>

Wanborough Handbell Ringers - Christmas 2019

The Handbell team had a busy December, performing their collection of carols and seasonal tunes at 13 venues/ events in the area.

- We continued to support our traditional venues and performed at the Prospect Hospice, and also the Great Western Hospital where we entertained staff, patients and their visitors.
- The handbell team also 'Ring Round the Pubs' in Wanborough and nearby villages, where collections were made for our chosen charity.

The season would not be complete without our short performance at the Benefice Carol Service, held at All Saints, Liddington.

We raised a grand total of £546.91, which will be donated to the Swindon Food Collective. Thank you to all who gave so generously, and thank you to the pub landlords who kindly allowed us to make the collections at their premises.

The handbell group starts up again for Christmas in September 2020. If anybody is interested in joining us later in the year, please contact me for more details, or visit our web site www.wanboroughringers.org.uk/index.php/handbells

Nicky Pullan, Team Leader, 01793 790904, nicky@wanboroughringers.org.uk

News from Liddington Bell Tower

Saturday 8 February: A full peal is to be attempted on the magnificent peal of 6 bells at All Saints Church, Liddington. The peal will start at 4.00 pm approx and if successful will last about 3 hours. The arranger and conductor for the peal, is Alan Eyles, whose late grandfather, Pete Anger, was also a ringer and a former tower captain at Shrivenham, and also rang at other churches in the area in years gone by.

Tony Pullan, Tower Captain, 01793 790904. tony@wanboroughringers.org.uk

News from Wanborough Summer Show

Saturday 22 August 2020

Good news. The Wanborough Show Committee have secured at their cost, for a third year running the children's (and adults) climbing wall.

This will be a free attraction for families who visit the show in August.

Even better news. Through local sponsorship there will be a second free attraction. The fun loving, Last One Standing inflatable.

Barry Hillier on behalf of the Wanborough Show Society.



Sparkle & Shine

Established fully insured cleaners

Available for:

Weekly, Fortnightly or Monthly cleans
Seasonal Spring cleaning or
End of Tenancy cleans

Please call or email to discuss your
requirements & obtain a free quote

sparkleyourhome@icloud.com

07935543158



INNOVATION IT SUPPORT

James Matthews

Home and Business Onsite IT Support

- Computer Repairs
- Networking
- Data Recovery
- CCTV Installations

Microsoft
CERTIFIED
Professional

Microsoft
Small Business
Specialist

01793 541320

www.innovationitsupport.com



PIE & A PINT

Every Tuesday

Any Pie
& a Pint
only
£13.00
Available every Tuesday



1 crosskeyswanborough 2 crosskey@wanborough.co.uk 3 01793 750302
4 5 Buryton, Wanborough, SN4 0AP 5 www.crosskeywanborough.co.uk

PLEASE DRINK
RESPONSIBLY

VE Day 75th Anniversary – 8 May 2020



As confirmed in last month's Lyden we are planning a village celebration to mark the VE Day 75th Anniversary on Friday 8 May 2020 which will be open to all residents.

There will be musical entertainment during the afternoon, including music from WW2 era and classic upbeat covers. It will be a great family event so please keep this date free in your diaries. More details to be announced in future Lyden magazines.

We are also looking for more helpers and we'd welcome ideas, assistance and support from any local group, organisation or charity that would like to participate. If you are interested in being part of the team please contact Parish Clerk or Tessa Lanstein (contact details in the back of the magazine).

We are also interested to hear from anyone who has old photos or information on how the village looked during WW2 for the display in the Church. If you are able to provide any information please contact the Parish Clerk.



World War 2 Memorial

Following on from last month this is the second article providing details of those mentioned on the World War 2 memorial.

Albert Edward Pickering

Service Number: 4853323

Although the memorial in the church shows George Pickering, the gravestone in the churchyard has the name Albert Edward Pickering. Was "George" the family name?



Military records shows Albert's birth county as Leicestershire in 1903 and that he was the foster-son of Mrs P Smith of Upper Wanborough. Phyllis Mary Smith and her husband Percival Goodman Smith, a carpenter and joiner, lived in the cottage that is now 12 Church Road; the only cottage still thatched in a row at the junction of Church Road and Kite Hill.



Albert enlisted as a corporal in the 2nd Battalion of the Lincolnshire Regiment. The 2nd Battalion embarked for France attached to the 3rd Infantry Division in October 1939. They were followed by the 6th Battalion, part of the

46th Infantry Division, in April 1940 and both served with the British Expeditionary Force and managed to return from Dunkirk after the battles of France and Belgium, although on 26th May 1940 many of the 2nd Battalion were captured at Poperinge, near Dunkirk.

After returning to England, both battalions spent time in the United Kingdom on home defence anticipating a possible German invasion. The 2nd Battalion, remaining with the same brigade and division throughout the war, then spent the next four years training in various parts of the United Kingdom before taking part in the D-Day landings in June 1944. The battalion was then engaged throughout the Normandy Campaign, taking part in Operation Charnwood, Operation Goodwood, and the Northwest Europe Campaign until Victory in Europe Day in May 1945. Although the date Albert joined the Lincolnshire Regiment is unknown he must have been part of the D-Day landing as he was reported wounded just a couple of weeks later on 22nd June 1944.

The next report shows Albert was "accidentally killed" on 31st August 1944 and he is buried in St. Andrew's churchyard, one of four headstones in the churchyard that are maintained by the War Graves Commission.



Albert's will was administered on 25 June 1945 by Percival Smith's son, William Percival Goodman Smith, a carpenter like his father and who lived in Swindon.

Vicky Nash 1926 - 2019

Vicky, who was a long-term resident of Wanborough, former deputy Post Mistress and Shop Owner of Wanborough Post Office and village stores, sadly passed away on Boxing Day following a short illness. She leaves behind her children, John and Sue, Marie and Louise grandchildren and Ella, Oscar Luke and William great grandchildren.

Vicky was born in 1926 and lived in Scunthorpe until she met Ken Nash during the war. Ken was a fighter pilot and Vicky was the only female Plotter on the Bomber Command, love blossomed. They married in 1948, and shortly after they married Ken went out to Tanganika and Vicky followed a year later. In Tanganika they moved homes often, in 18 months they managed to move 11 times and twice lived in mud huts. It was in Dar es Salam that John was born. Several years later they then moved to Kenya, where they built their own home and this is where Sue was born. The family spent many happy years in Kenya and eventually returned to the UK in 1965.



Their new home was to be Beckenham Kent, with Kens stepmother. Ken didn't like working in the cold and wet as a Surveyor (having worked in the sunshine for 18 years) so they decided to go into the Pub trade and moved to the White Horse in Lowick in 1966, then another pub following that in Raunds. It was decided that the long hours were not ideal with 1 teenage son and young daughter, so they cast their net and found and bought the Post Office and Village Stores in the High Street, Wanborough. They moved into Wanborough in 1970 and ran a successful business in the village. When retirement beckoned Ken and Vicky sold the business in 1981 and moved into a new house on the then brand new Bovis estate. Vicky was in her element, creating a home and garden, cooking cakes and looking forward to long days and holidays with Ken.

Sadly, Ken died in 2004. He was much missed by Vicky who continued to live in her beloved home without him. Having been diagnosed with Lung cancer in 2015, and suffering a series of health issues in between times, she managed to remain there until July 2019. She then moved into Aldbourne Nursing Home when her health started to deteriorate and she needed 24-hour care. After a short illness Vicky passed away on Boxing Day morning. She will be missed by many, but at 93 she had lived a long, varied and happy life.

Drop-in and Sing in Wanborough 2020

A relaxed, friendly approach to singing – no experience needed - no auditions – no music reading required - unaccompanied pop, folk, gospel & world music - all taught by ear. 2 til 4.30



Dates: 29 Feb, 28 March, 18 April, 27th June, 25 July , 26 September, 17thOctober,
21 November and 19thDecember

Sessions are at Wanborough Village Hall, SN4 0AD. **All welcome** - especially those who think they can't sing! £10 payable on the door (inc' song sheets and refreshments) **To book your place contact:**
Vicky Sweeney 07593 833943 vicky@singtastic.co.uk

Wassail!

Early January has become a time we now look forward to each year. This is because the Stroud Wassail is now a regular date in our diary. Always the first weekend after New Year the Stroud Wassail echo's back to the Twelfth Night revels of the fifteenth century Guilds and Inns of court. It includes a full day of entertainment starting at 10am and going on into the evening. Getting there is easy as the train takes the strain.

The term "Wassail" originates in Anglo-Saxon times as a form of toast. "Waes Hael" meaning "Be of good health". The reply to this toast is "Drinc Hael" meaning "drink healthily". In Stroud Wassailing was celebrated until the 1960s. Close to Twelfth Night the Wassailers would go from door to door, or around the pubs, carrying the Wassail Bowl and singing a Wassail Song, wishing everyone a prosperous new year. There is a rich collection of Wassail songs from the villages around Stroud which reflect a tradition that was once widespread in England and is very different to the apple Wassailing that has become popular more recently. The Wassail practice was revived as an annual custom in the town 4 years ago, giving these songs a chance to be sung again and the mummers plays to be heard.



The day starts with over 34 traditional Morris troupes, musicians, players and other street entertainers who do their thing at various locations around the town. The entertainers move around so the audience don't need to, but as Stroud has a very interesting Farmers' Market and lots of individual artisan shops to wander through, why not! A parade of the entertainers takes place at midday and ends at the Subscription Rooms with singing and a mummers' play. The entertainers then disperse and perform again around the town in the afternoon. Come the evening the Lord or Lady of Misrule oversees the election of the King Bean and Queen Pea and an evening of festivities in the Subscription Rooms.

A larger delegation of Wanborough residents helped us with the Wassailing this year and it was another great day out! **Anita Basevi**

CHISELDON LOCAL HISTORY GROUP

Our next meeting is on Wednesday, 19 February at 7.30 p.m. in Holy Cross Church Hall, Butts Road, Chiseldon, SN4 0NJ, when Chris and Judy Rouse will be presenting on "Riots, randies and women not their wives; the Railway Navvies, their social and living conditions".

Some 20,000 miles of railway track were laid in Great Britain before the end of the 19th century, using technology that was limited to simple block and tackle lifting gear and copious amounts of gunpowder for blasting through solid rock. The rest of the work was done by armies of men using picks, shovels and barrows. Many of those men were known by the generic term "navvy". The word is a contraction of "navigator" and harks back to the great construction projects of the previous century, namely the building of the canals, or "navigations", which were now being superseded by the railways. Many of the new "navigators" were direct descendants of the canal-builders, and they were proud to carry on the traditions that went with the job. Much of their activity was "piecework", paid by the yard or ton rather than an hourly wage – and they were sometimes paid in beer! Large numbers of navvies descending on a community had a very large impact. Chris and Judy will tell us about the life of the "navvy" and what it was like to live alongside them. Imagine the impact of the navvies as they made their way through Chiseldon in 1879-1881....

Meetings are free to members, but there is a £3.00 charge for visitors. Why not join us? Membership is still only £10 per year. For details of this year's programme of talks and events, please visit: www.chiseldonlhg.org.uk

12 Beaches

There's a beach for everyone: from the stunning sands of Latin America, to the beautiful British coast, onwards to the Mediterranean's best beach, and then down to a Pacific island paradise. Over the next three months I'll be suggesting some of the best beaches in the world.

JANUARY – San Juan del Sur Bay, Nicaragua

Nicaragua may be a little unknown as a holiday destination but at this time of year is bathing in sunshine and you could be too on their beaches. The San Juan del Sur Bay beach has a dazzling horseshoe shape of muted beige soft sand that is overlooked by a giant statue of Jesus perched north of the bay. The waters around here are calm and very rarely get large enough to surf, making this an ideal beach for young families. For surfers, there's the Playa Maderas a little further along. There are plenty of fine eateries from which you can enjoy a most delightful sunset. And after sundown, there's a fun vibe of a busy nightlife to enjoy.



FEBRUARY – Isla Espiritu Santo, Sea of Cortez, Baja California Sur, Mexico

Oceanographer Jacques Cousteau called Mexico's Sea of Cortez "the world's greatest aquarium" because of its unique and rich ecosystem. To get up close and personal with nature, base yourself in La Paz. All the islands are UNESCO protected as World Heritage Biospheres.

Uninhabited Espiritu Santo, absurdly beautiful, is the jewel in the crown: the sea is so turquoise it's like swimming in a bottle of Curaçao. Once ashore you'll find wedding-cake white sands, nail-varnish pink volcanic rocks, clouds of yellow butterflies and strange 300-year old boojum trees. At Los Islotes, you can snorkel with friendly sea-lions. There are many migratory species such as humpback whales, manta rays and leatherback turtles.

MARCH – Kovalam Beach, Kerala, India

Known as the Paradise of the South, Kovalam is arguably the best beach in India. This coconut-forested, crescent-shaped beach is full of character, with the Vizhinjam mosque at the northerly end, brightly-painted boats in the middle, and Ayurvedic massage centres where you can indulge in a rejuvenating herbal, body-toning massage or other holistic therapy. The equivalent of 30p buys you a scrummy curry served on a leaf.



APRIL – White Island, Camiguin, The Philippines

Small, pear-shaped and known as the Island Born of Fire, Camiguin is home to the spectacular White Island beach, a Tippex-white sandbar with views of two volcanoes, Mt Hibok-Hibok and Mt Vulcan. Close by, the turquoise Bohol Sea hides an unusual treasure – the Sunken Cemetery lying 20 feet underwater following a volcanic eruption in 1871. The island has old ancestral homes and historic churches.

**For any holiday enquiry please do contact me Judi Moore 01793 791238
judi.moore@thepersonaltravelagents.co.uk**

HERITAGE TREE CARE

Professional Tree Surgeons

**Comprehensive Service
Qualified Staff
Fully Insured**

- ✓ Pruning and Shaping
- ✓ Felling and Removal
- ✓ Hedge Cutting
- ✓ Stump Grinding
- ✓ Tree Planting

Free quotations and advice
Call Ian Walding (N.C.Hort / N.D.Arb)

01793 790210

email: ian@heritage-treecare.co.uk

www.heritage-treecare.co.uk



**Sugarcraft
and
Cake
Decorating
Supplies**

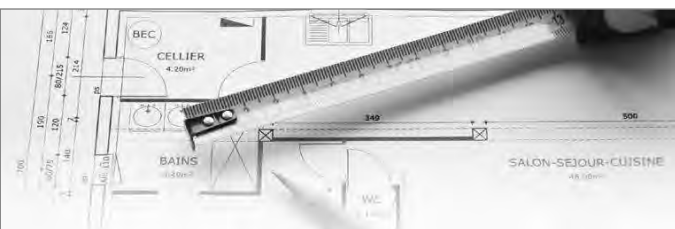
1 Hilliers Yard, Marlborough SN8 1BE
01672 288080

Write Learn Tutoring English Tuition

Heather Hawkins
Dip Classical Studies, BA, MA, MTA

- Enthusiastic, dedicated one to one English tuition
- KS1 - Undergraduate
- SEN welcome
- Individually planned lessons
- DBS enhanced checked
- Competitive rates

Tel: 07876763795 email: heatherhawkins@btinternet.com



ROB SPURR

Planning & Design Consultant

Architectural plans drawn for extensions,
conversions and internal remodelling.

I deal with all aspects of planning applications
and building regulations, Listed Buildings and
Conservation Area consents.

3D bathroom designs and specifications.

Rob Spurr trading as Sun Design & Consultancy Ltd

Southview, 22 Ham Road, Wanborough

Email: robspurr@btconnect.com

Tel: 01793 790381

Mob: 07786 933460

QUALIFIED DRUM TEACHER WANBOROUGH



**COMPETITIVE PRICES!
SPECIAL OFFERS!
ALL STYLES AND GENRES!**

**FOR MORE INFO
PLEASE
CONTACT:**



AIDAN O'NEILL - CRUNCH ENTERTAINMENT

info.crunchentertainment@gmail.com

07760452222

Do you suffer from Macular Degeneration?



Typical symptom of Macular Degeneration

Same view using a specialist lens

We use a unique lens technology, to help those suffering from Macular Degeneration by:

- Increasing the Magnification - giving a larger, clearer image
- Incorporating Prism - to focus the light on a healthier part of the eye
- Special Filters - to enhance contrast and reduce glare, giving more comfortable vision



VISIONVISIT
mobile opticians

Fully qualified Optometrist

Call us or visit website for further details



"I can see faces again! Everything is so prominent and the colours stand out much more"
Mrs Bracegirdle, Chiseldon.

www.visionvisit.co.uk **01793 232 588**

mark jerome
painter & decorator

All types of interior and exterior decorating
using the latest in dust free technology

Transform your solid wood kitchen with paint
using the best hardwearing paint finishes
available

"Thanks for a fantastic job!"
Debbie Moxon, Baydon Post Office

01793 790307

High St, Wanborough

James's Landscaping and Gardening Services



*Grass Cutting *Hedge Trimming
*Small Trees *Garden Maintenance
*Clearances

Hard Landscaping-
Various Including *Fencing
*Gates *Paths *Paving *Sheds

Locally based in Wanborough.
For quotations, bookings or
information- please telephone
James Robb 07863 599991

M J SMITH PLASTERING SERVICES

CHURCH ROAD WANBOROUGH

- FRESHEN UP OLD WALLS AND CEILINGS FOR DECORATION
- RE-PLASTER DATED ARTEX AND CEILINGS.
- EXTERNAL RENDER AND FLOOR SCREEDING
- INSURANCE WORK UNDERTAKEN
- ALL WORKS GUARANTEED

25 years experience

01793 791042

07764 968525

Marlonsmith@sky.com

HB'S BEAUTY

Hannah Thoburn
BEAUTICIAN

Call: 07789 005121

Hannah_thoburn@icloud.com
The Verne, The Marsh, Wanborough, SN4 0AR

Woodfix

Kitchens, bathrooms and carpentry

Quality Kitchens & Bathrooms
supplied and fitted

Bespoke Built-In Cupboards,
Shelving and Worktops

All types of Flooring,
Replacement Doors & Loft Ladders

01793 790752

woodfix@btinternet.com

www.woodfix.co.uk

A local family run business
20 years experience
Expert advice & design and
Project management
CALL US FOR A FREE QUOTE



Hooper's Field Hall, Wanborough

Tuesday 9.30-10.15am

Zumba Gold classes are low impact to suit the needs of the active older participant as well as those just starting their journey to a fit and healthy lifestyle.

No dance experience needed! Just wear comfy clothes, suitable shoes and bring a bottle of water.

Come and join this friendly, welcoming class.

Cost £5 a class

Contact Lorna Mackay for details:

Tel: 07582 612778 Email: lornaszumba@hotmail.co.uk

Pilates Classes

Millbrook Primary School, Freshbrook
Monday 6 - 7pm

Hooper's Field Pavilion, Wanborough
Tuesday 6.30 - 7.30pm

St Paul's Church Centre, Covingham
Thursday 6.30 - 7.30pm & 7.40 - 8.40pm

Christ Church Community Centre, Old Town
Friday 2 - 3pm

Interested? Contact Sonia Jones on
☎ 01793 791386

✉ pilates@sonia-jones.com

🌐 www.sonia-jones.com

Please visit my website for other venues and services

PC Doctor Dan

115 High Street, Cricklade

Tel: 01793 759192 Mob: 07890 377517

Home & Business Computing

- ✓ Free pick-up and drop-off service
- ✓ Purchasing advice, setup and installation
- ✓ Secure wireless and home networking
- ✓ Share files, photos, music and printers
- ✓ Virus and spyware detection and removal
- ✓ Training to meet your specific needs
- ✓ Hardware/ software repairs and upgrades
- ✓ Improve PC performance and reliability
- ✓ Create backups to protect key information
- ✓ Consultancy and managed service options

20 years IT experience @Intel Corporation

www.pcdactor-dan.co.uk

Barrett Accounting and Tax Services

Chartered Accountants
Chartered Tax Advisers



LIMITED COMPANIES,
UNINCORPORATED
BUSINESSES AND
INDIVIDUALS

ACCOUNTS
BOOK-KEEPING
TAX RETURNS
PAYE • PAYROLL
VAT • TAX ADVICE

If you want service that gives
value for money, whilst being
professional and efficient,
contact us on

01793 741250 or
mail@barrett-ats.co.uk



Yoga Classes for all abilities

Wanborough Village Hall

Tuesdays 7.45—9.15pm

Contact Nicki Clinch 07866957234

Email: nicki_clinch@hotmail.com

web: <http://swindon-yoga.co.uk>

Pregnancy, Post natal yoga and baby massage



Nicola Cook
Hypnotherapy

Healthier mind,
happier life

Solution Focused Hypnotherapist

Nicola Cook

07578 591577

nicoladawn78@icloud.com

www.nicolacookhypnotherapy.com

Coffee, Cake and Chat

Come along and meet old friends and new!

Coffee and Cake £3.50

Every Thursday, 10 - 11.30am
The Brewers Arms , Wanborough

To find out more, or arrange a lift, call Lorna Naseem at
The (Old) Post Office on 01793 791206

Maths Tuition GCSE & A Level

- Qualified Maths Teacher
- GCSE exam marker
- Over 20 years teaching experience
- 1:1 lessons
- Revision lessons
- Flexible hours
- Based in Wanborough

÷ ∞ Σ
∫ π √
≥ × +

Helen James BSc(Hons) PGCE MA

Email: helenmjames11@gmail.com Tel: 07776 309633

www.helenjamesmaths.co.uk



Video Photography Audio Cine

Video Transfers

VHS - Camera Tape / Cards - DVD

Cine Film Conversions

Standard/Super 8 - 16mm

Slide Negative Scanning

35mm - 120 format - slideshow creation

Audio Conversions

Cassette Tape - Open Reel - Mini Disc - CD

Event Filming - Creative Editing

Web Video Films - DVD Production

Providing professional services
in Wanborough since 1998

Tel: 01793 790842

ian@takeonestudio.co.uk



MOT Class 4,5 & 7 Tel:01488 72118 Mob: 07836332390

Aerial Business Park
Lambourn Woodlands
Membury, Hungerford
RG17 7RZ

Visit our showroom at
14 Lotmead Business Village, Wanborough

CHRISTOPHER LAWRENCE DESIGNS

**Quality Craftsmanship &
Expert, Innovative Design**



We design, sell and install kitchens
manufactured in Great Britain and
have three innovative showrooms

*We also supply a wide range of small and
large appliances, cabinets, doors, handles,
lighting, plinths, worktops, taps, flooring,
radiators, splashbacks, pop-up and USB
sockets, as well as wet room and bathroom
fixtures and fittings. We sell direct and can
supply/deliver only or supply and install
any of the above products.*



Best of Houzz Awards 2018 & 2019 for
Highest Levels of Customer Satisfaction.
Read more reviews: <https://bit.ly/2srnlyO>

Office: 01793 790108 Mobile: 07930 699500
info@chrisltdesigns.co.uk www.chrisltdesigns.co.uk



Cat Care & Services

If you need help caring for your pet or are away from home and don't
want the stress of the cattery 'Cat Care & Services' will meet your and
your pet's needs

Our Visits will include:

- Lots of socialising, play
- Lap time and attention for your pet
- Swindon and surrounding areas
- £10 per visit, (visits are 1 hour)



Cat Care & Services



Helen Spring: 0777 0767 916

BAYDON MOWERS

Garden Machinery Specialists

- New Machines
- Servicing & Repairs
- Collection & Delivery for ride-ons
- Spare Parts
- Welding & Brewing gases

Mon - Thurs 9am - 5.30pm

Fri 9am - 5pm

Saturday 9am - 1pm

Unit 1 Skylarks | Bytham Road
Ogbourne St George | Marlborough
Wiltshire SN8 1TD

**WE HAVE
MOVED!**

**01672
841207**

**richard
james**

incentivised.com

Local Agents with Local Knowledge
Our people make the difference...

"Living in Wanborough puts me in a unique
position when it comes to selling the benefits
of the parish
to any potential buyers. I have worked in the
local area for over 16 years and specialise
in the sale of village and country homes
between Swindon, Marlborough and Devizes."

Ross Sutton
Director



Contact your local agent today on
01793 814542 or 07889 366130
ross@richardjames.info

SWINDON & DISTRICT SAMARITANS - MYTHS BUSTER



Christmas and New Year can be a difficult time for some people. Swindon and District Samaritans are always there to listen when needed. They are raising awareness of their service and are also keen to explode some myths that might exist about how Samaritans operate. Here are some they've told us about:-

You need to be suicidal to contact Samaritans We encourage people to reach out for emotional support as early as possible, when times are tough.

It costs money to contact the Samaritans Calls are free to 116 123 from both landlines and mobiles – including pay-as-you-go. There's no need to have any credit or call allowance to call 116 123

Callers need to be near a branch It doesn't matter where you are in the UK, calls to 116 123 will be picked up by a trained volunteer from one of our 201 branches at any time of the day or night every single day of the year.

Samaritans talk as much as callers When someone rings, a volunteer will answer with something like, "Samaritans, can I help you?" and will then listen. If it's difficult to speak immediately, then we'll wait – we won't hang up.

Contact has to be by phone Samaritans also provides emotional support by email and text. Text 07725 909090 or emails should be sent to jo@samaritans.org.

Samaritans are anonymous We are available to provide face to face support from our branch at 6 Curtis Street in Swindon. Opening hours are on our branch website (www.samaritans.org/branches/swindon)

We offer advice However we are contacted, we provide emotional support to anyone and never advice, regardless of the circumstances. We offer emotional support without any pressure. We do not judge people and whatever we are told is confidential.

Samaritans are not needed in today's world Every six seconds, we respond to a call for help – we're here for anyone who needs someone.

If anyone needs someone to talk to, we listen. We won't judge or make decisions – our opinions or advice are not important for the call. We focus on thoughts and feelings and may ask questions to explore those feelings further. Our vision is that fewer people die by suicide - that's why we do what we do.

Family Announcements

Nothing to report this month. If you are celebrating a birthday, anniversary, special occasion or want to send a message of thanks, let us know and we will add your message here. Send messages to Lydenannounce@gmail.com

Privacy Statement

1.The Lyden Magazine needs to keep a small amount of personal data about its subscribers to enable the correct delivery and renewal of subscriptions. 2.We will collect, store, use, amend, share, destroy or delete personal data only in ways which protect people's privacy and comply with the General Data Protection Regulation (GDPR) and other relevant legislation. 3. We will only collect the following information: Name and Address for delivery 4. We will provide individuals with details of the data we have about them or amend or delete when requested by the relevant individual.4 We will keep all personal data secure. 5.We will not share any personal data with third parties or individuals outside of the Lyden distribution team.

St. Andrew's Church Wanborough

Sidespersons' Roster February 2020

2 February	10:30	Family Communion	J Hales
9 February	No Service		
16 February	10:30	Family Communion	S Troughton
23 February	08:30	Holy Communion	J Smith
1 March	10:30	Family Communion	T Robb

Lesson Readers and Sidespersons needed for St Andrew's

Would you be willing to be a Lesson Reader or Sidesperson at St Andrew's, at any service please? Helpers have become very few, so it would be greatly appreciated. If you are able to help, please contact Terry Roddy on 01793 791354

St. Andrew's Cleaning Rota

<u>Brass:</u>	<u>General (on/by 2nd Saturday)</u>
Feb: Volunteers please	Volunteers please
Mar: G. Hayes and L. Barnes	Volunteers please
Apr: J Hales and J Hobbs	Justina Lewis
May: The Kosidowski Family	The Kosidowski Family
Jun: Volunteers please.	Volunteers please

St Andrew's Flower Rota

31 January Alison Carse and Elizabeth Pickworth
 7 and 14 February.....Kay Cullimore and Jackie Midwinter
 21 February.....Joan Carron and Gail Kosidowski

NB. Lent commences 26 February – no flowers during Lent

There are Books of Remembrance in All Saints', Liddington and St. Andrew's, Wanborough. If anyone wishes to have a name recorded there, please contact a Churchwarden.

Wanborough Playgroup

Village Pre-School

- Early Years Foundation Stage Curriculum delivered by friendly and qualified staff in a stimulating environment in a large hall with good sized secure garden.
 - Registered with Ofsted to take children from 2 years old
 - Registered to receive Universal 15 hour and Extended 15 hours funding
 - Playgroup hours: Monday-Friday 9.00-13.00, Optional 08.45 start

ALL SESSIONS ARE TERM TIME ONLY AND SUBJECT TO AVAILABILITY

Village Hall, High Street, Wanborough, SN4 0AD Telephone: 07444 352587
 e-mail: wanboroughplaygroup@hotmail.co.uk

Website: www.wanboroughplaygroup.org.uk Facebook: @wanboroughpreschool



Registered Ofsted Number

109096

Registered Charity Number:

1026150



CONTACT DETAILS FOR LOCAL ORGANISATIONS

BENEFICE

Vicar

Rev. Bill O'Connell T:791359 E:villagevicar@hotmail.co.uk

Captain of Wanborough and Liddington Bellringers

Tony Pullan T :790904

Practice 1st, 3rd and 5th Fridays Wanborough, 2nd and 4th Fridays Liddington

Liddington 100 Club

Caroline Tams T: 07876 714950 E: ctams1@icloud.com

St Andrew's Flower Club

Chair: Kay Cullimore Tel 790458

Treasurer: Jackie Midwinter Tel 950852

Secretary: Alison Carse 790858

WANBOROUGH PARISH COUNCIL

Chairman: Bob Biggs, Wanborough Herb Nursery, Tel: 01793 790327

E: cllrbiggs@wanborough.info

Vice Chairman: Roger Whitfield, 2 Manor Orchard, 791820

E: cllrwhitfield@wanborough.info

Clerk: Angela Raymond, Tel: 07588 769829

E: clerk@wanborough.info

LIDDINGTON PARISH COUNCIL

Chairman: David Lomax, 38 Purley Road, Liddington. Telephone 01793 790440 / 07931 895044

Vice Chairman: Adrian Moore, Medbourne House, Medbourne Lane, Liddington. Telephone 01793 790391

Clerk: Val Curtis, 4 Mallard Close, Swindon, SN3 5JQ, T: 01793 530818

M: 07989 647438 E: parishclerk@liddington.org

BOROUGH COUNCILLOR

Gary Sumner, Blenheim, Kite Hill, Wanborough, SN4 0AW

T:790814 E:gary@ridgewayvillages.co.uk

WANBOROUGH PRIMARY SCHOOL

Headteacher: Andrew Drury, Tel: 790269

Clerk to the Governing Body: Lana Tilley Tel: 790269

PTA : Chair: Guy Simmonds c/o Wanborough Primary School,

E: contactpta@wanboroughprimary.org

www.wanboroughprimary.org

BEAVERS/CUBS/SCOUTS

Group Scout Leader: Tessa Lanstein, Tel: 07795 057420

(Waiting lists are in operation so please make early contact)

Boys and Girls aged 6-8 / 8-10½ / 10½ -14 meet weekly in term time.

WANBOROUGH VETS CYCLING

Secretary: David Halfhead, Tel: 790852

WANBOROUGH JUNIOR FOOTBALL CLUB (The Wasps)

Secretary: Matthew Strickland T: 07754 978487

E:secretary@wanboroughwasps.com

Details of Team Managers U7(Year2) to U18(Year 13) at

www.wanboroughwasps.com

WANBOROUGH HANDBELL RINGERS

Nicky Pullan, 2, The Beanlands, Wanborough. Tel: 790904

WANBOROUGH SHOW SOCIETY

Show Secretary: Mike Thompson M: 07768 558799

WANBOROUGH CRICKET CLUB

Hon. Sec. : Andy Thompson, Tel: 01793 852623

WANBOROUGH TENNIS CLUB

Hon. Sec. Melanie Brough 741277 melaniebrough2@gmail.com

Membership Sec. Anica Alvarez Nishio -

wanboroughmembers@gmail.com

WANBOROUGH BOWLS CLUB

Hon Sec. Mags Sanders Tel. 01793 614861

info@wanboroughbowlsclub.org.uk

WANBOROUGH BEER FESTIVAL/THE OLD BOILERS

Secretary: Barry Hillier 07443 490019

wanboroughbeerfestival@gmail.com/theoldboilers@gmail.com

WANBOROUGH VILLAGE HALL

Lettings Secretary: Karen Hawkins 07799 856000

E:vvhlettings@gmail.com Hall calendar on Wanborough.info

Chairperson: Dion Dean 07841 866773

Secretary: Sarah Ingram 07530 451549

WANBOROUGH PLAYGROUP (Village pre-School)

Supervisor: Sarah Ingram, Tel: 07444 352587 (during Playgroup hours)

Chair of the Committee: Kayleigh Bizley 07818 432657

wanboroughplaygroup.org.uk

wanboroughplaygroup@hotmail.co.uk

WANBOROUGH PARENT AND TODDLER GROUP

Enquiries: Alicia Batty, Tel: 07895539287

e-mail: mr-mrspabatty@hotmail.com

(Wednesdays 1.10 – 2.45pm (during school term), at Wanborough Village Hall)

WANBOROUGH THEATRE CLUB

Hon. Sec.: Mrs. D. Rawlings, Tel: 01793 979170

BISHOPSTONE AND HINTON PARVA WI

Secretary: Sue Reade. Tel: 710208

E: sue_reade@btinternet.com

BRIDGE CLUB

Jim & Joy Ball, Tel: 790293. (Friday evenings at Hinton Parva Village Hall)

LIDDINGTON SCOTTISH DANCING GROUP

Linda Clarke. Tel: 790158

Thursday evenings 7.45 – 10pm (September – May at Liddington Village Hall)

LIDDINGTON VILLAGE HALL

Hon. Sec.: Alison Babbington, 10 The Street, Liddington SN4 0HD

Chairman: Mr. Matthew Bowman, Meadowbank House, Medbourne Lane, Liddington SN4 0EY Tel: 791401

matthewbowman56@gmail.com

Hon. Lettings Sec.: Sarah Hill, Church Rd, Liddington Tel: 790104.

sarah@jonhill.co.uk

THE RIDGEWAY LINK

Co-ordinator & Contact for lifts: Mrs. Rachel Hale, Tel: 791192

LOCAL WEBSITES:

For further information and news from our four villages, visit: www.liddington.org or www.wanborough.info

For Bishopstone and Hinton Parva visit www.villagenewsletter.org

LYDEN MAGAZINE CONTACTS

Editorial/Advertising: Andrea Jerome Tel: 790307

lydenmagazine@gmail.com

Subscriptions: lydensubs@gmail.com

Announcements: lydenannounce@gmail.com



Beacon Developments

RELIABILITY - QUALITY - VALUE



specialists in home transformations

- new builds
- extensions
- loft conversions
- listed buildings
- kitchens
- bathrooms
- design & planning
- project management

E: info@beacondevelop.co.uk T: **01793 790245** W: www.beacondevelop.co.uk



Est.
1986

Specialists in village property
for over 30 years.

Contact us now for your
free valuation.

01793 618080
sales@chappells.uk.com
lettings@chappells.uk.com

Out of the Box Catering

www.outoftheboxcatering.net
Email: info@outoftheboxcatering.net



Event Catering for Corporate and Private Functions

PAUL BISHOP

Interior and Exterior Painter and Decorator
Free Estimates
Competitive prices

8 SPINNEY CLOSE, LIDDINGTON
Call Paul on 790768 / mobile 07770 751275

Chappells
ESTATE AGENTS

Your Village specialist when it comes to selling or renting. Free valuations and market advice.

01793 618080

colin@chappells.uk.com/phil@chappells.com
www.chappells.uk.com

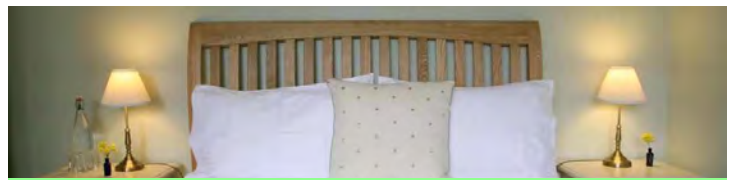
JUDI MOORE

YOUR WANBOROUGH BASED
TRAVEL AGENT

FULLY ABTA & ATOL REGISTERED

Call 01793 791238 or email me

judi.moore@thepersonaltravelagents.co.uk



Meadowbank House

Traditional Bed and Breakfast

Restful and luxurious accommodation in Liddington

01793 791401 www.meadowbankhouse.com

A & B Domestic Appliances

Guaranteed repairs to washing machines and tumble driers. A genuine professional repair service.

Contact Andrew Matthews at:

E: aandbdomestic@gmail.com

Tel: 01793 536332 Mobile: 07850 665925

11 Farman Close, Eldene, Swindon, SN3 6DP

The HAIR and TRICHOLOGY Clinic

Treatment of Hair and Scalp Conditions
NHS & Private Wig Service 01793 741136

Bellissima Unisex Hair Salon Ltd

Established 25 years

7 High Street, Chiseldon SN4 0NQ

01793 740147

www.hairandtrichology.co.uk

Mowerfixer

maintenance/repair service mowers,
hedgecutters strimmers etc. for the Ridgeway villages
New & 2nd hand garden machinery for sale

Doug Stevens

0789 979 1833 doug@mowerfixer.co.uk



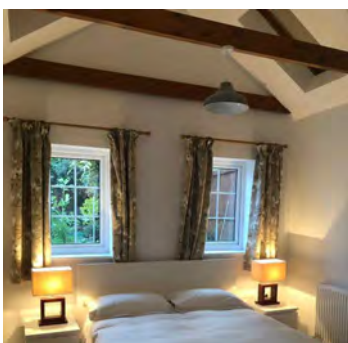
richard
james

Find me on incentivised.com/rossutton

Wroughton: 01793 814 542

Mobile: 07889 366 130

INCENTIVISED.COM
REAL ESTATE AGENTS



The Old Post Office

Beautifully converted
one bed accommodation.

Available for
short term rent.

Wanborough, Wiltshire
07903 210505

Beauty Salon in Wanborough!



Top brand products that give you the best and
most effective results possible.

Wendy Sharma

www.serenitybeauty.net
wendy@serenitybeauty.net
07803 722921

The Old Bakehouse
High Street
Wanborough
SN4 0AE
01793 790055

